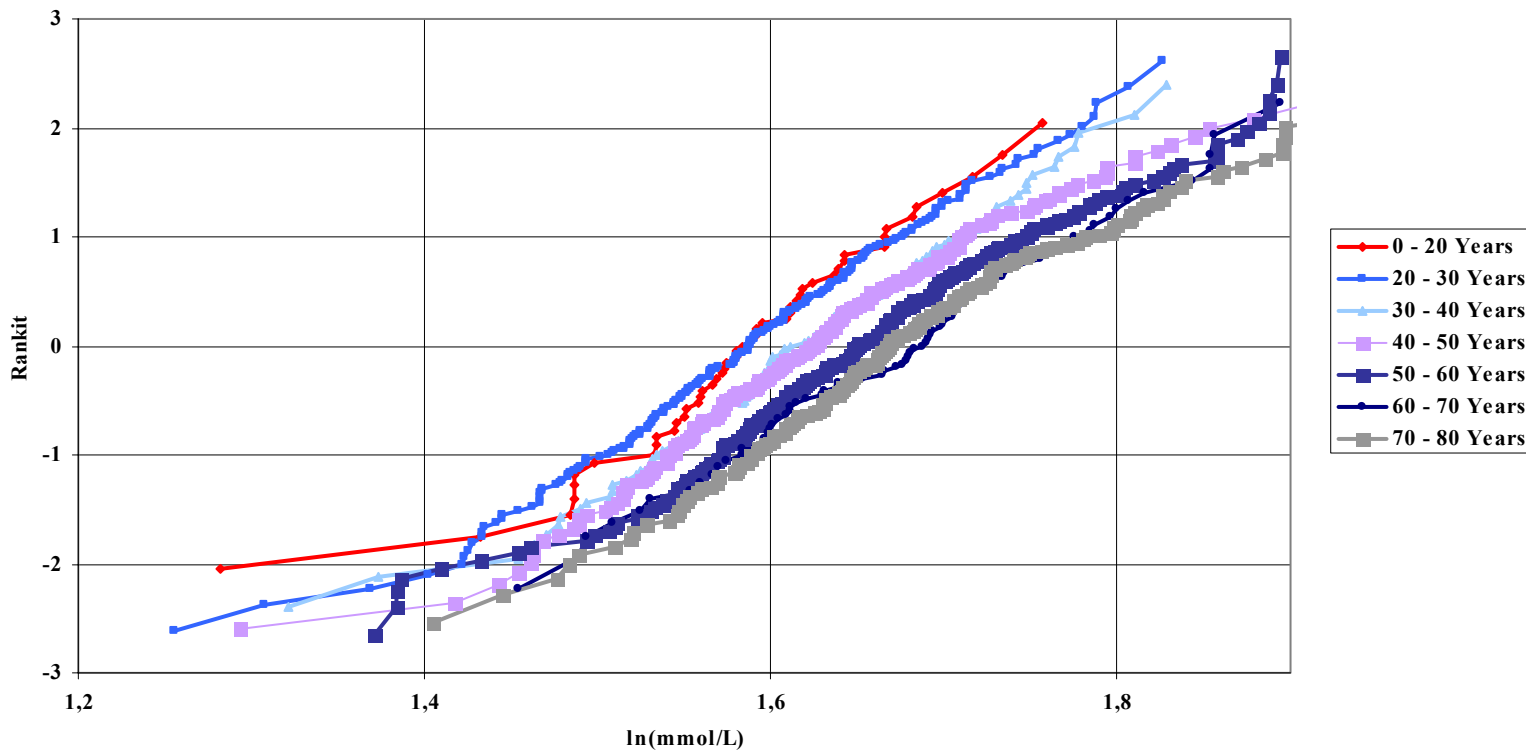
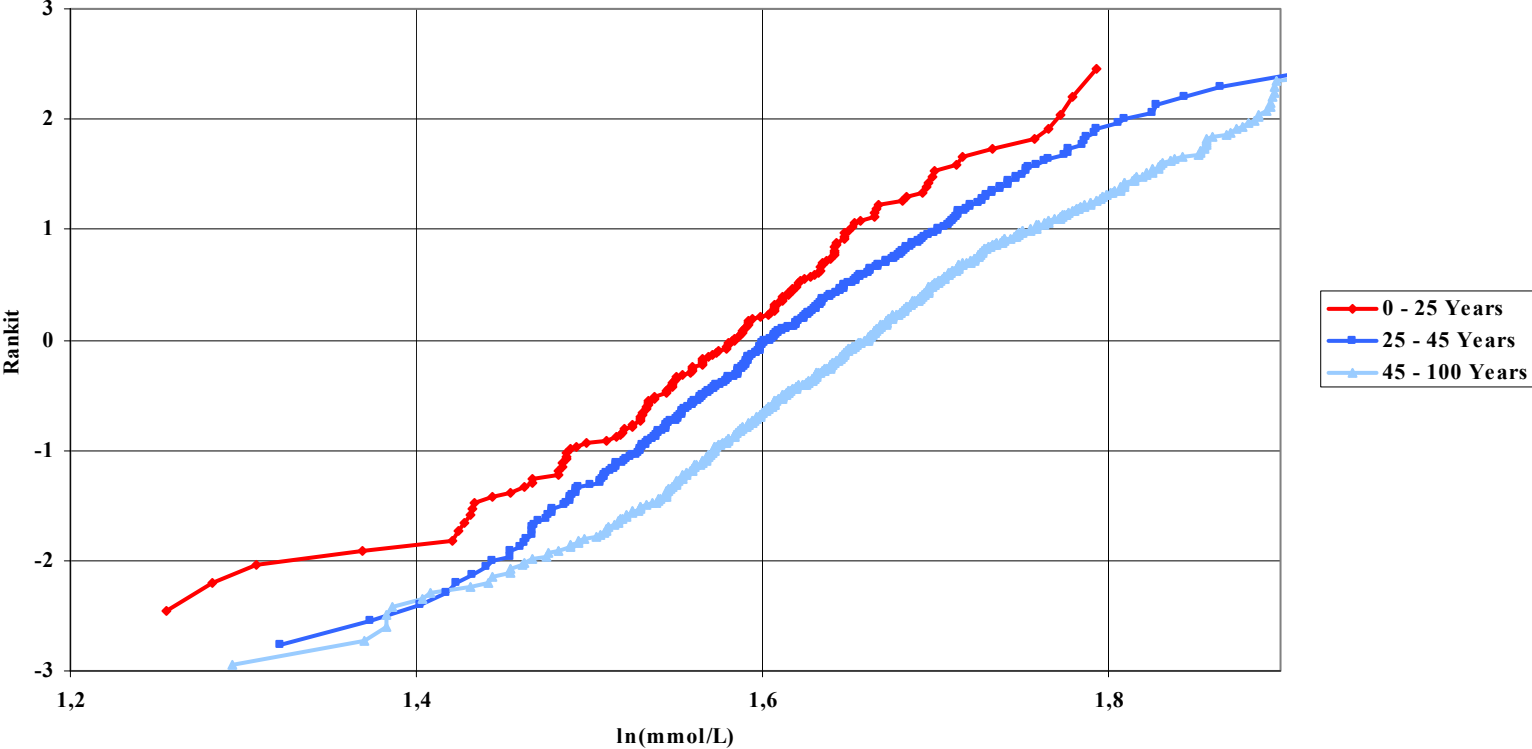


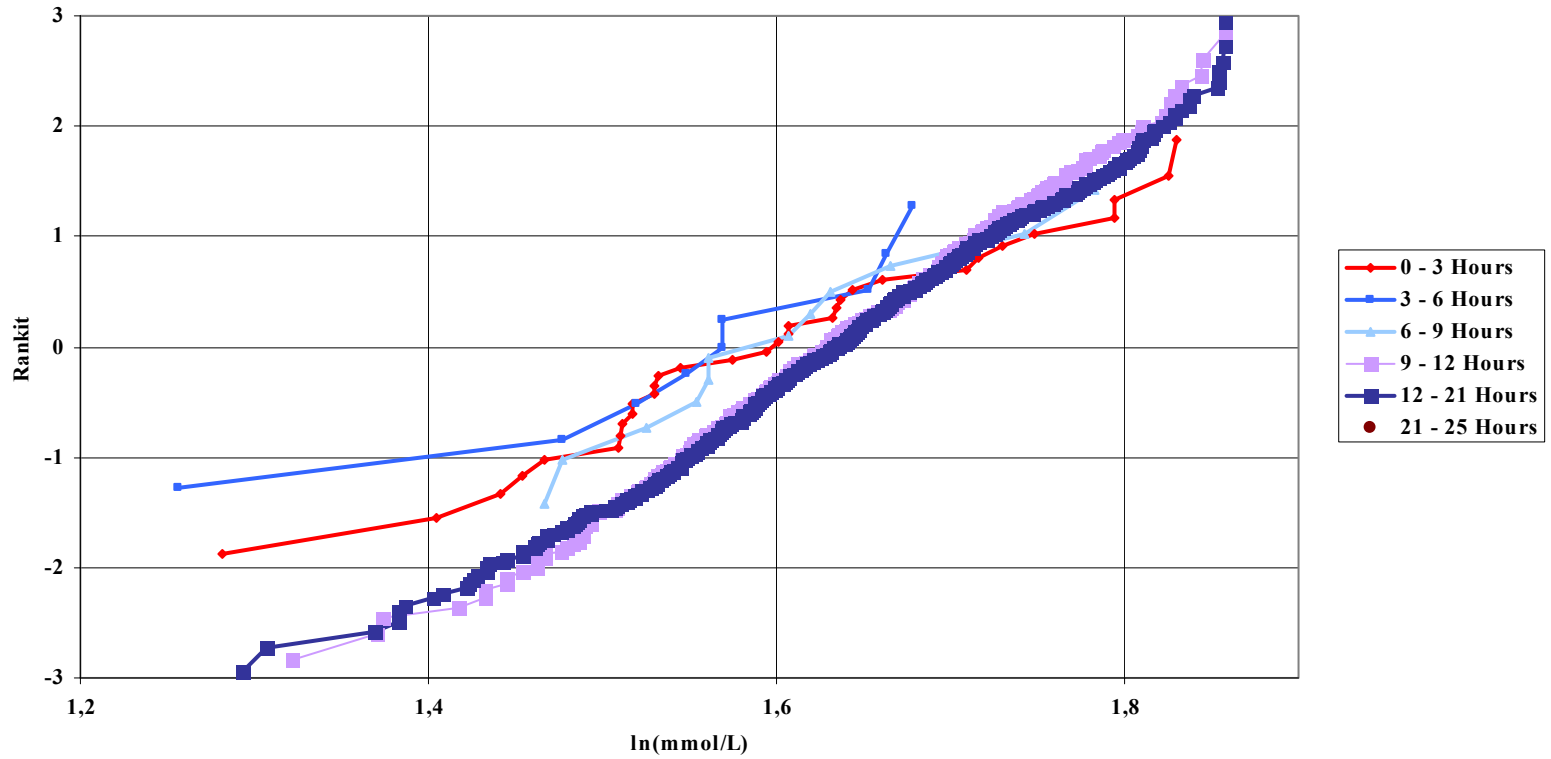
Glucose, Plasma, Fresh Age variation



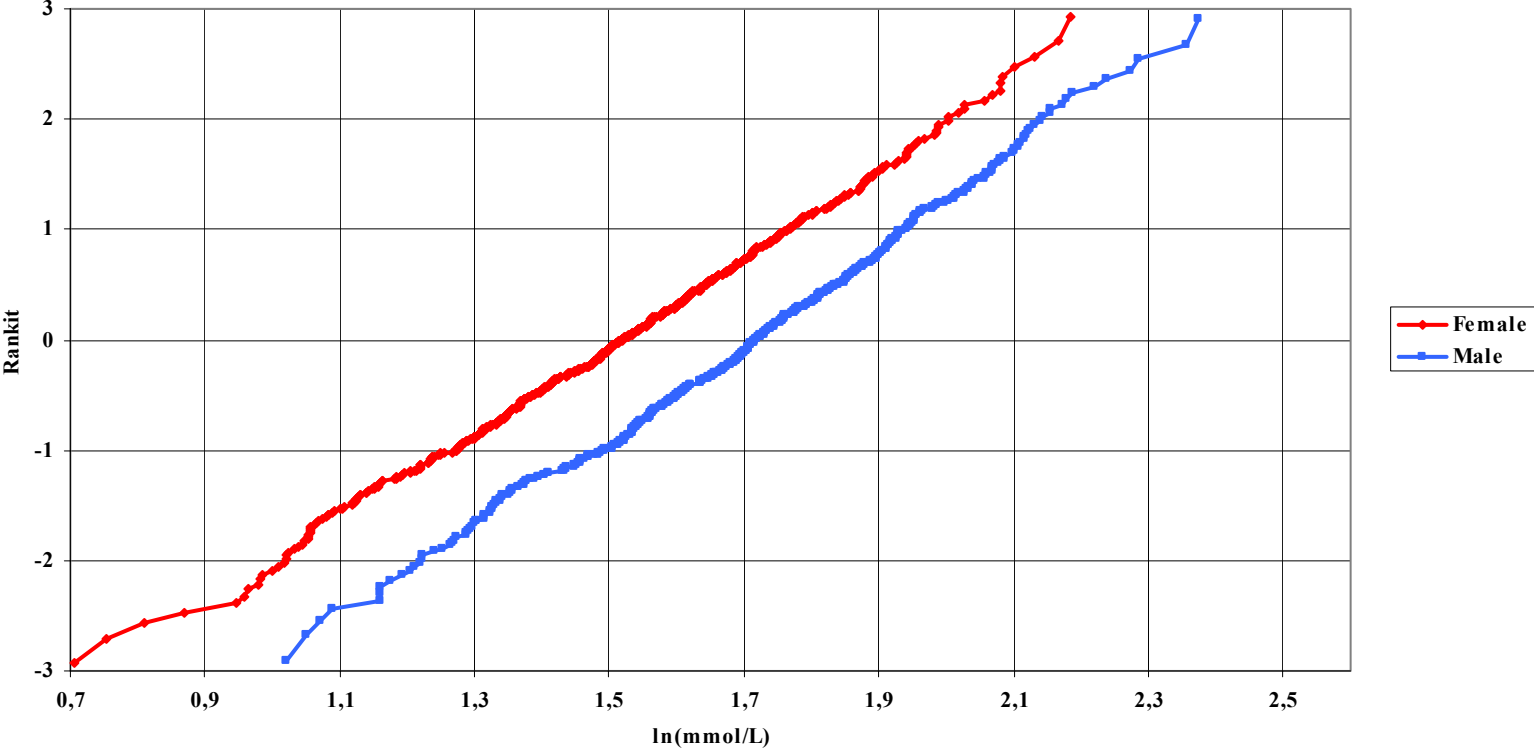
Glucose, Plasma, Fresh Age variation



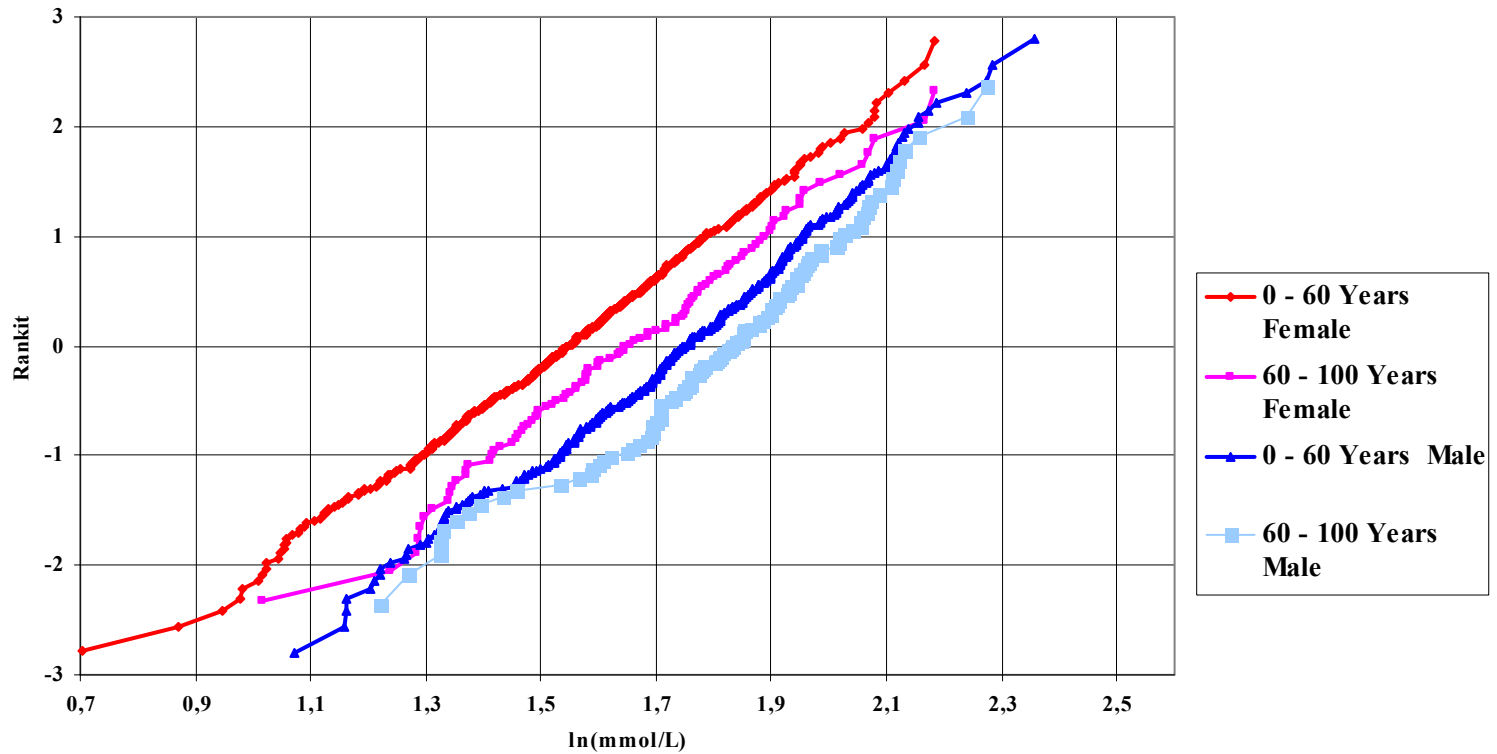
Glucose, Plasma, Fresh, Hours since last meal



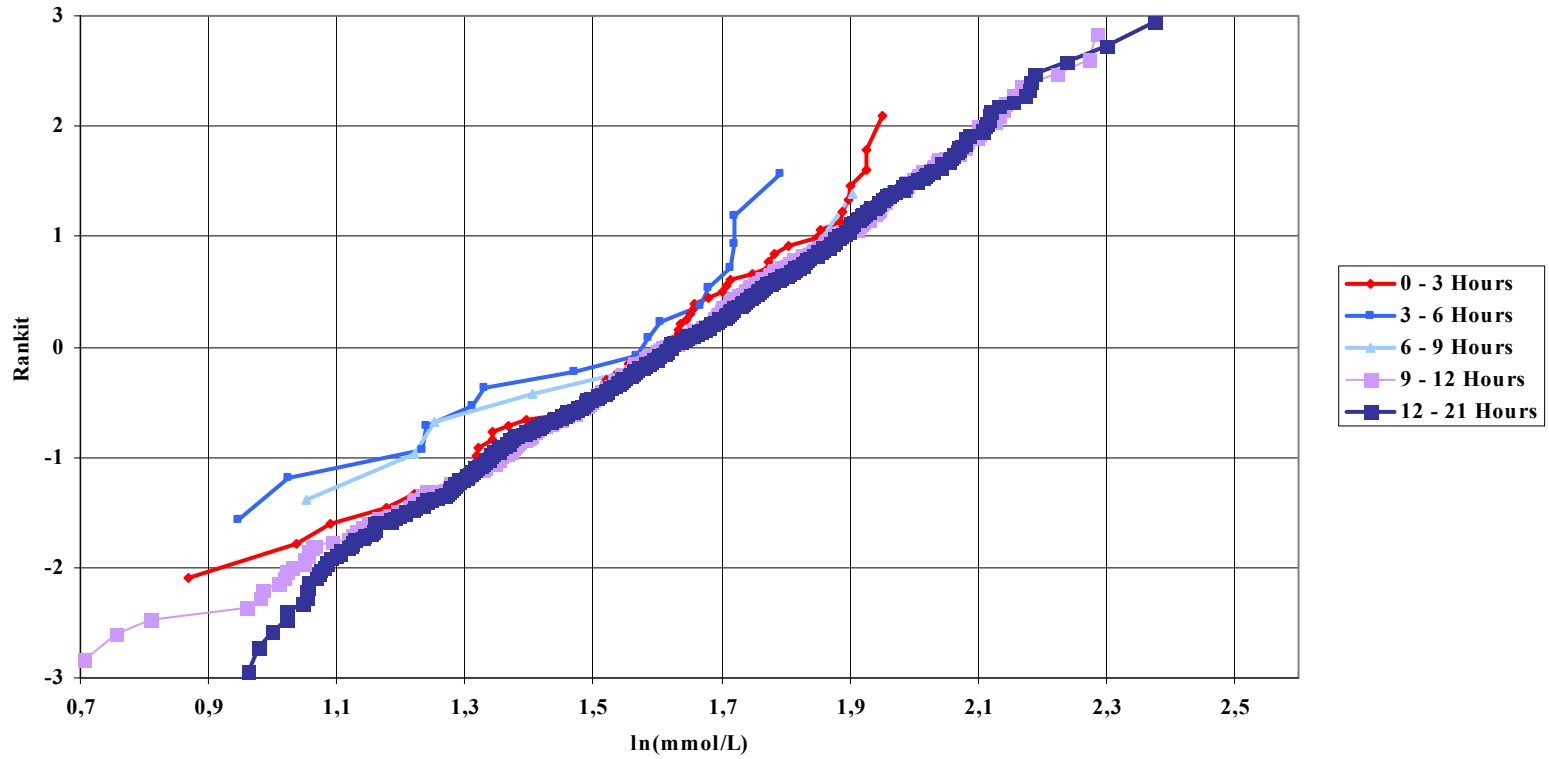
Urea , Plasma, fresh, Sex



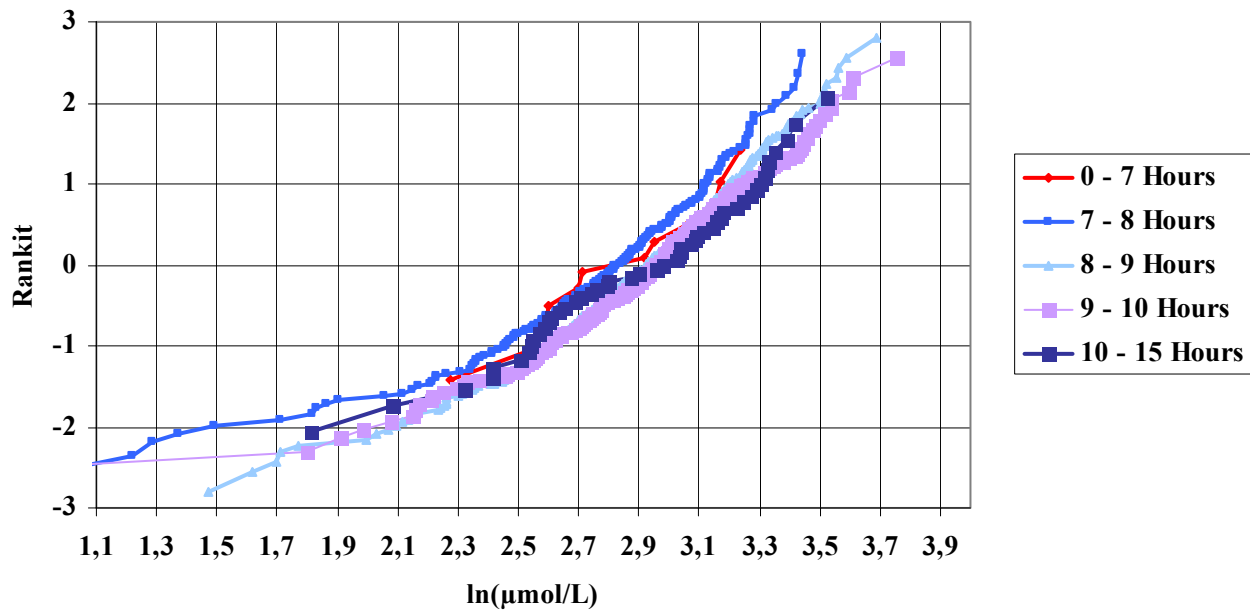
Urea, Plasma, fresh, Age and Sex variation



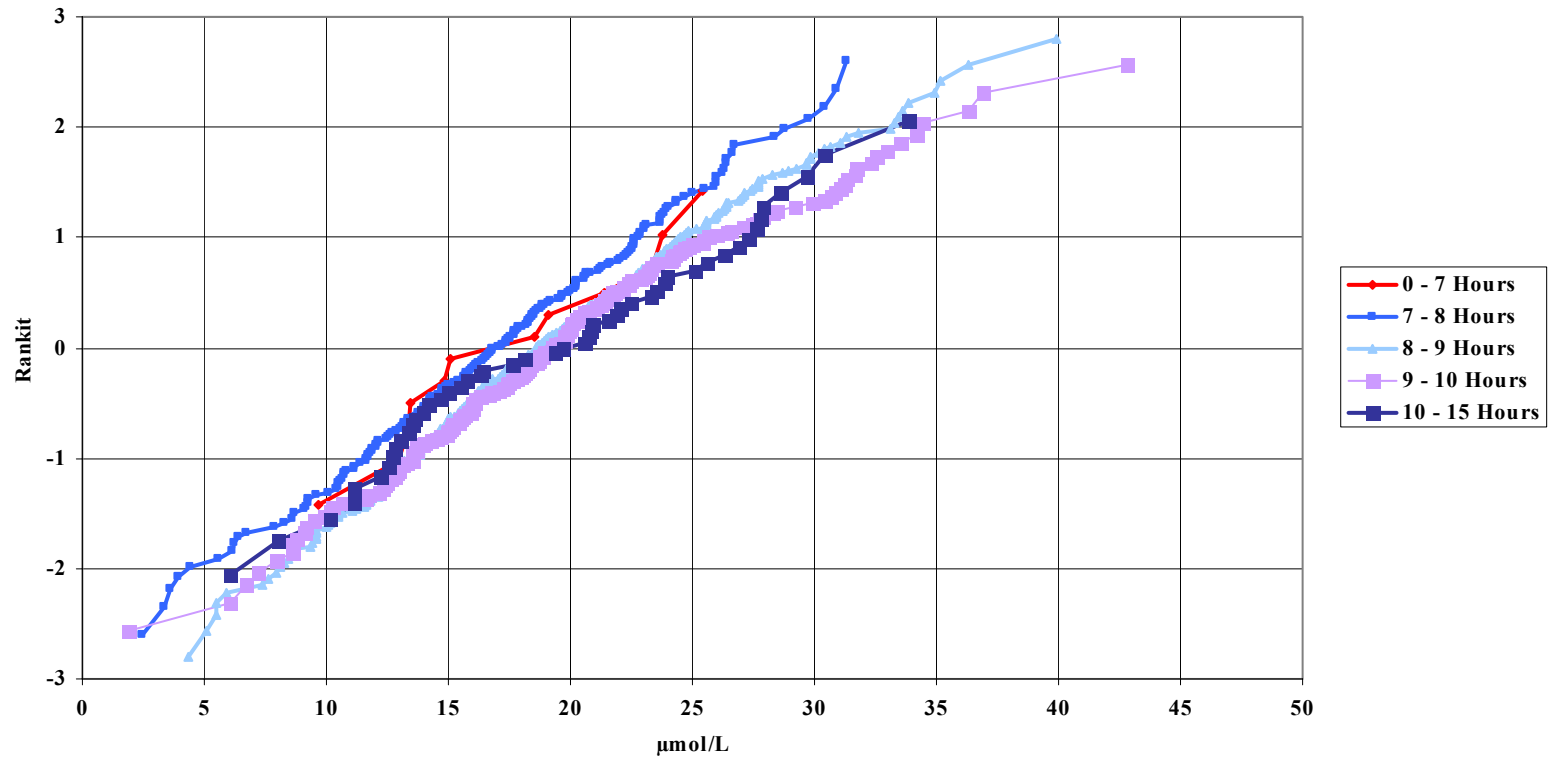
Urea, Plasma, fresh, time since last meal



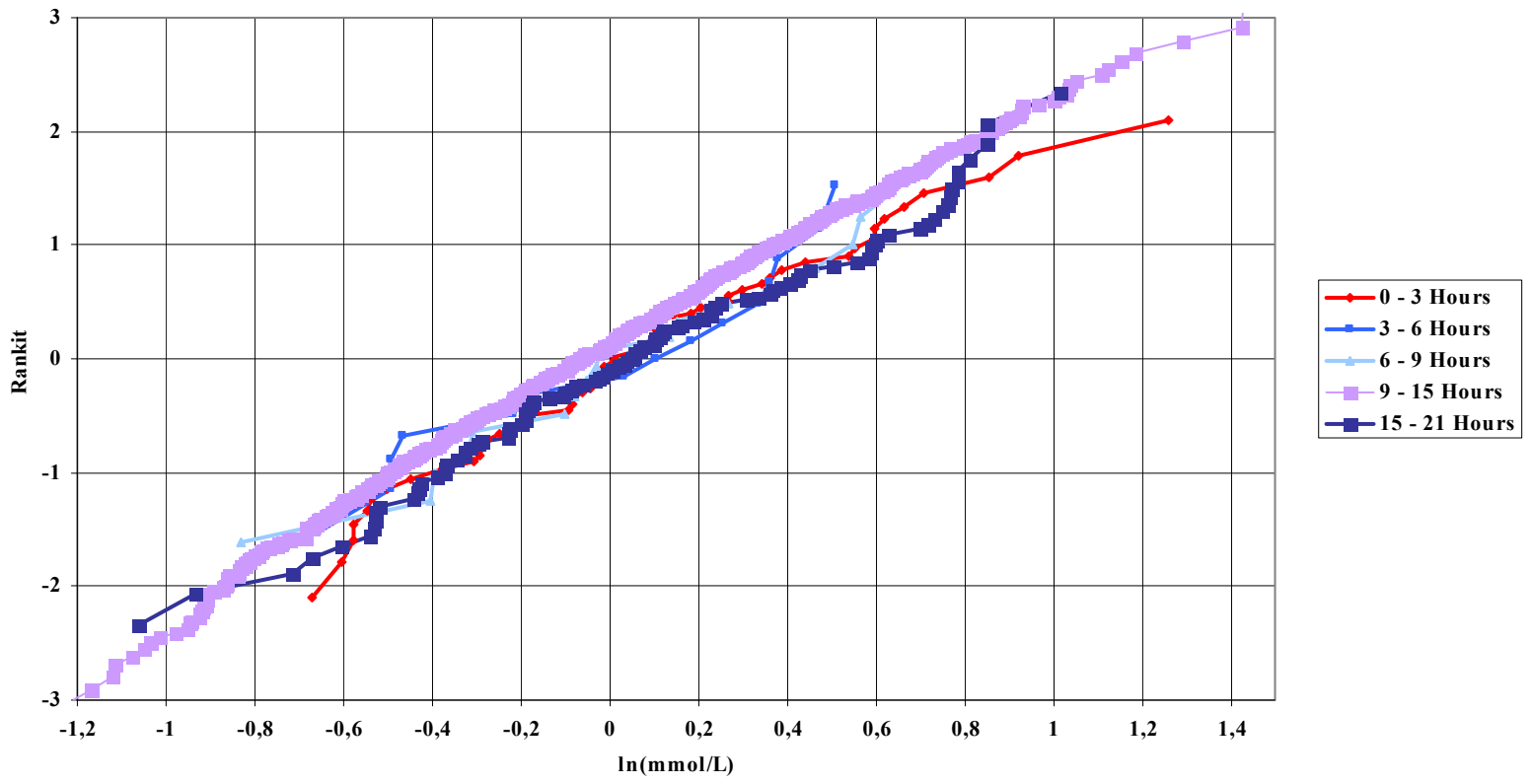
Iron, Serum, fresh, Hour of day



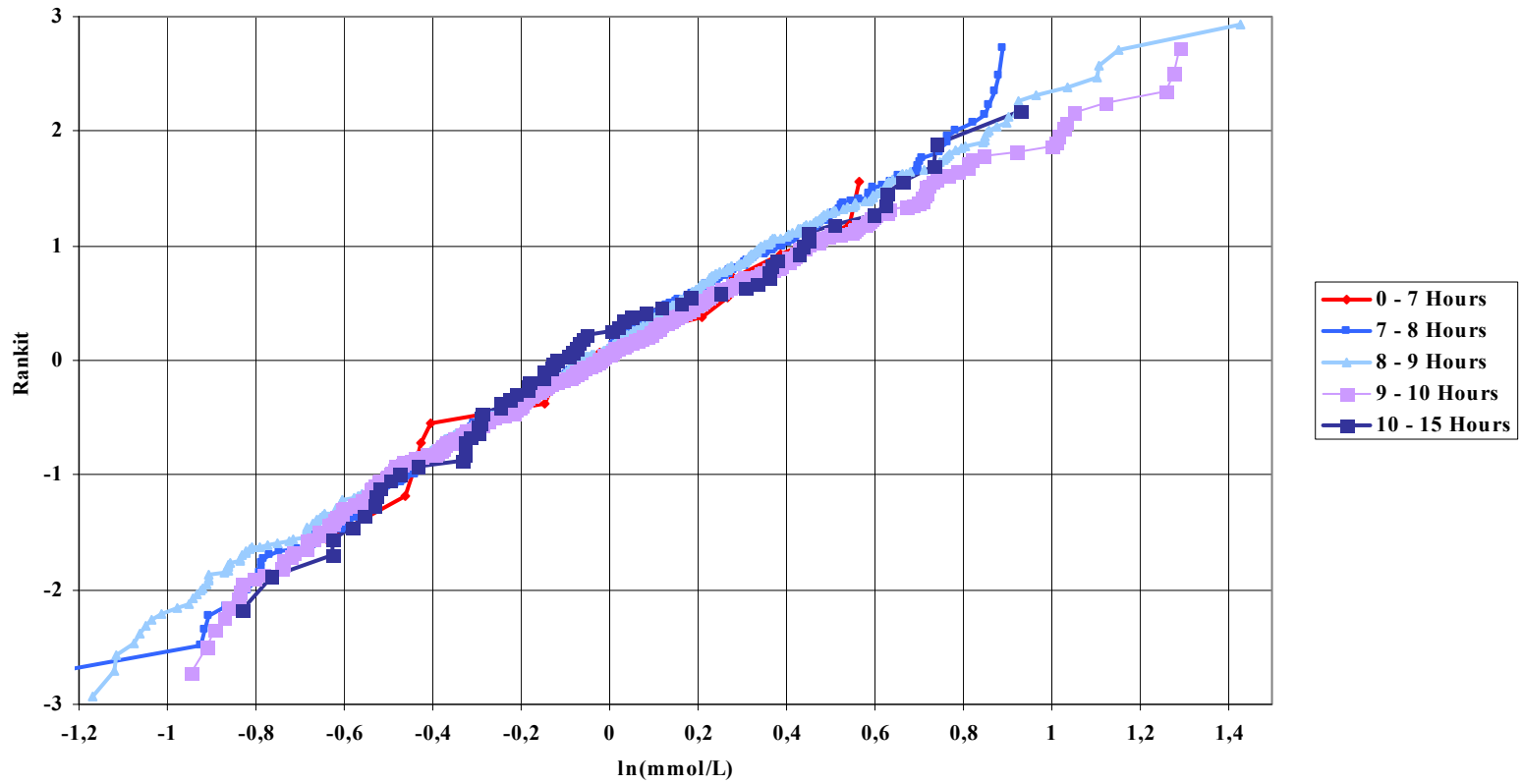
Iron, Serum, fresh, Hour of day



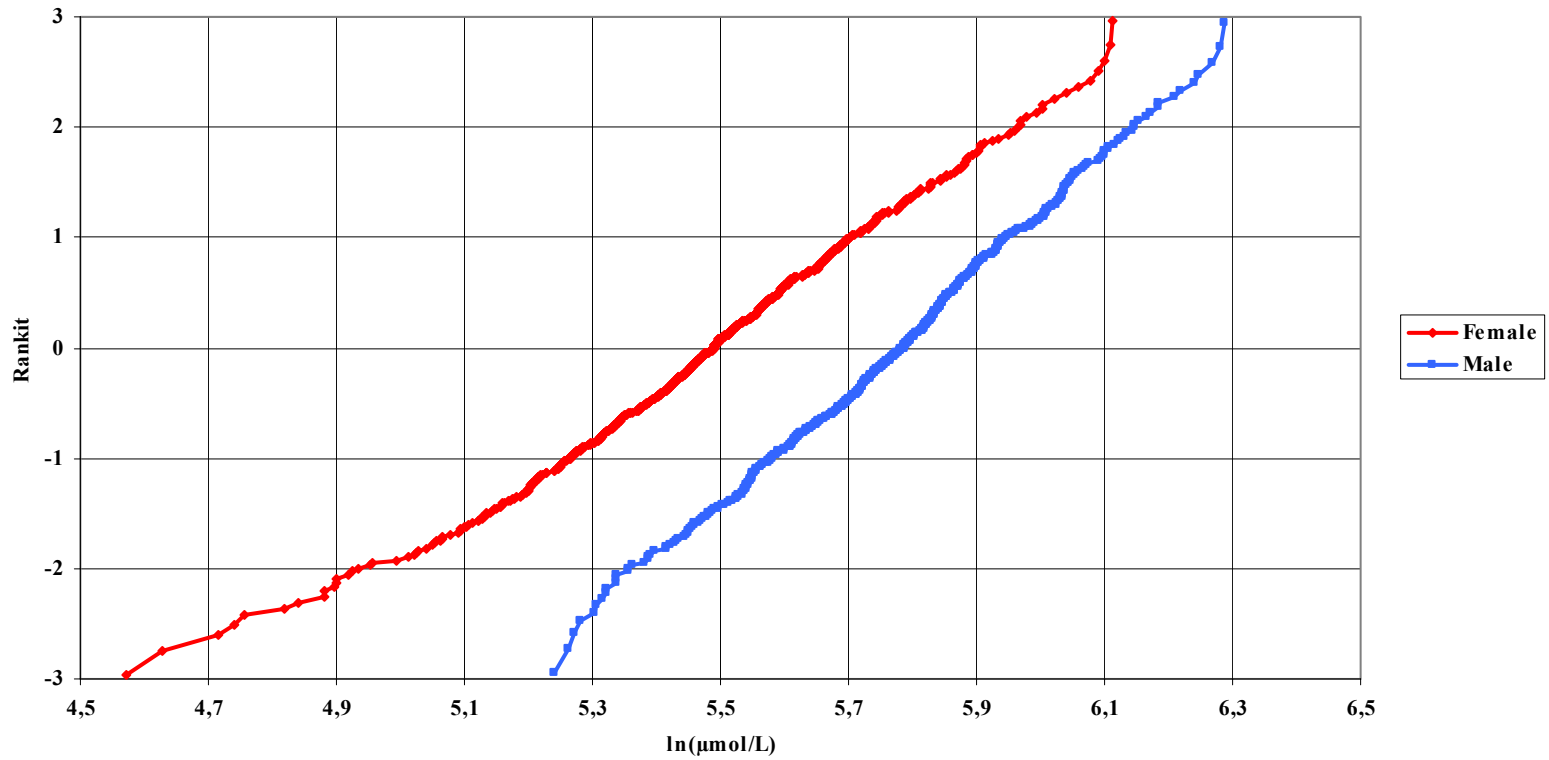
Triglycerides, Plasma, fresh, time from last meal



Triglycerides, Plasma, fresh, Dayvariation



Uric Acid, Plasma, fresh, Sex



Uric Acid, Plasma, fresh, time since last meal

